

Gilroy HS Parent Club, Inc

Support on campus for staff, teachers, students and families – enhancing the High School experience where possible.

Board:

Amparo M.,

Debby E., Delores P., Diana T.,

Lucy A.

Welcome - Agenda

- Aeries / School Website / Peach Jar
- Expectations
- Campus / Miscellaneous Tips
- Schedule
- ASB / Athletics / Extra Curricular Activities
- Community Service
- Parent Club

AERIES /Website/ Peach Jar

gilroyusd.asp.aeries.net

Register on Aeries for notifications / keep track of grades, attendance, grad status

-- if you aren't getting calls / emails

Check your settings; need to have valid email address on file with SCHOOL site

(information you supply like the old paper emergency cards)

- see website above or gilroyunified.org for help

gilroyhs.gilroyunified.org

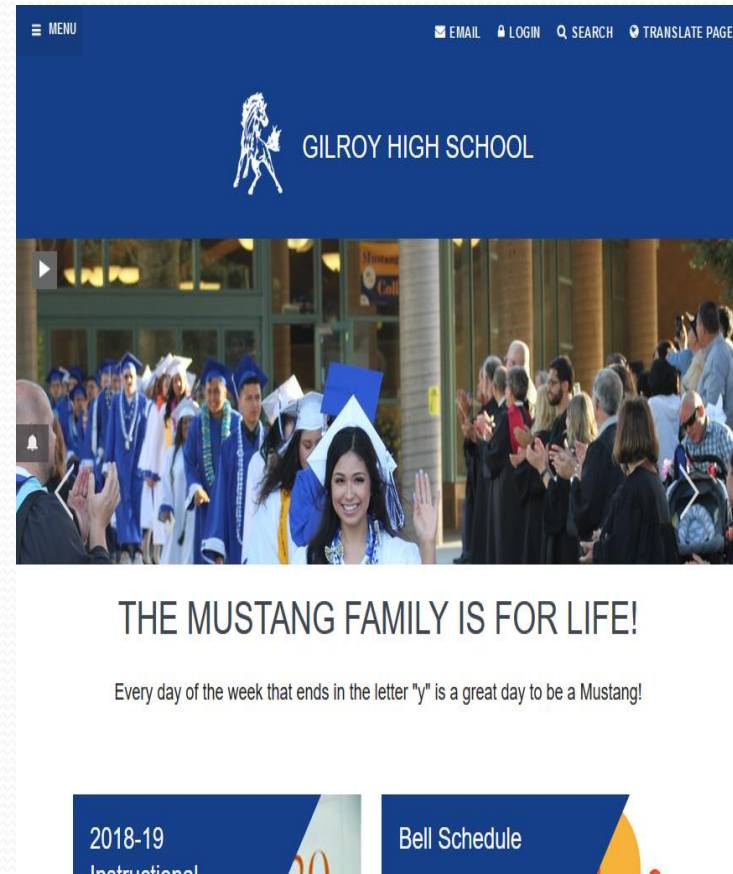
WEBSITE : **LOOK HERE FIRST**

Schedule information

Sports Information

Meetings, etc

Peach Jar : tool to electronically email fliers to email addresses in Aeries, Clickable links for more info / signup / donate



Expectations

- **Planner**

- ~~Block Schedule~~ / Map of campus / Guidelines
- Used as a pass out of class – *look at it sometime*
- Class work notations

- **Attendance**

- Arrive at / on campus at 7:45am to be in class seat for 8:00 am BELL; 5 tardies to one class = N
- Be at school everyday (or parent call in/ note/ dr note within 5 days)
- Make appointments after school or early release days
- Check out requires ID, at Attendance Windows – slip issued / can be stamped at appointment and returned with student upon return (**must be on contacts list – AERIES**)

Expectations (cont.)

- Character Counts / PBIS (Positive Behavioral Interventions & Support)
 - Keep GHS clean
 - Act responsibly – be a good citizen
 - Students responsible for actions on campus / classroom
 - Be on time / follow rules – phone & dress code & behavior
 - All those learned Character Counts Pillars – still in play!
- Lunch / Brunch – *great* cafeteria food options (Titan School Systems for lunch payments / free & reduced lunch applications)
- Custodians on campus are not food service maids – so please remind your students to put items in trash cans. There are plenty! **Nor are they chamber maids** – keep the restrooms clean and in good working order for all students.

AREAS on Campus MAP



8am-2:23pm

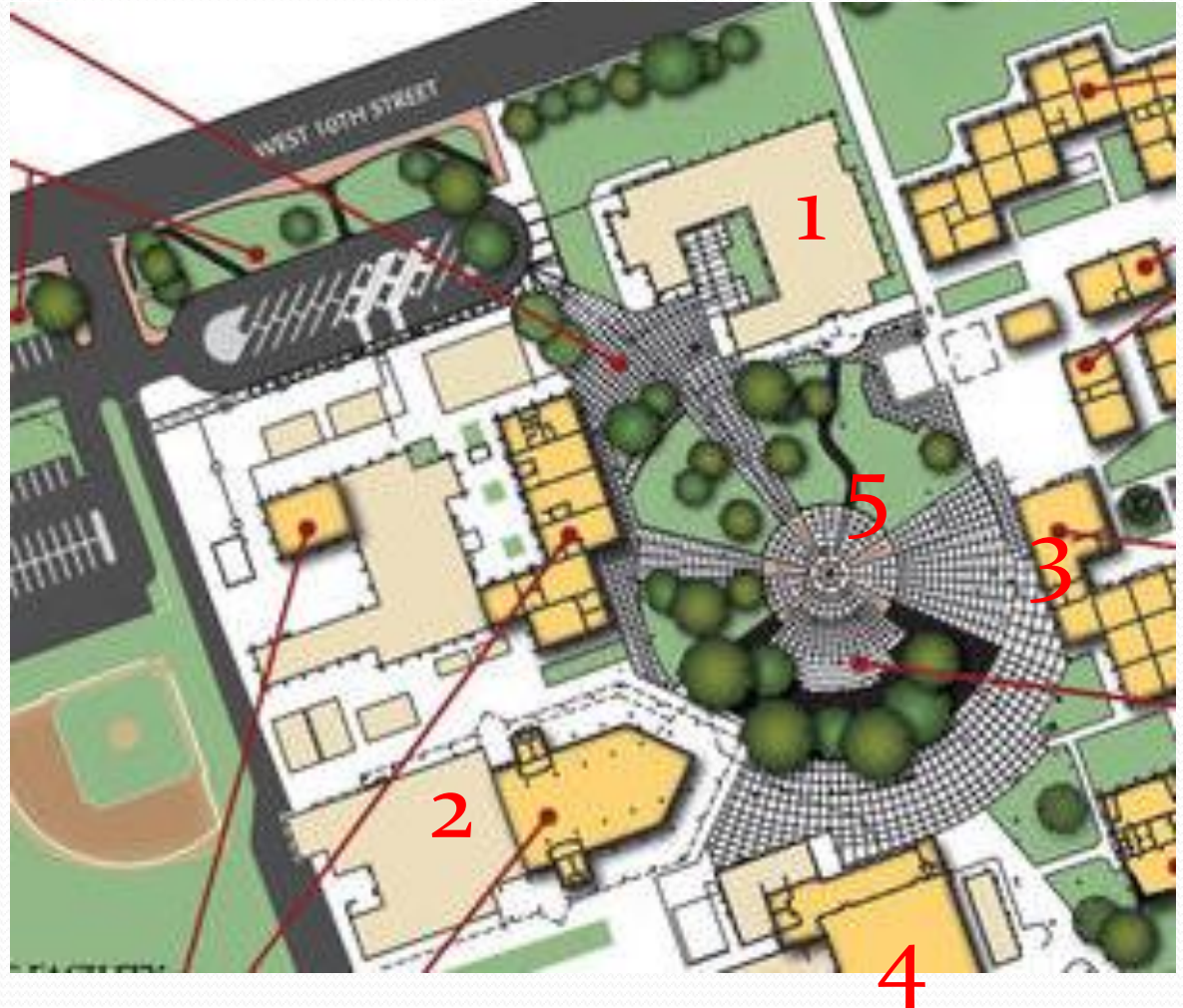
LEGEND:

- ↔ Cross Walk
- Drop off area
- ▬ Entry Gate to campus
- Drop off lanes

- ↕ Cross Walk
- Drop off area
- ▬ Entry Gate to campus
- - - Drop off lanes

AREAS on Campus MAP

- Main Admin Bldg / Library / BookRoom **1**
- Student Center / ASB / Student Services **2**
- CalSOAP **3**
- GYM **4**
- Centennial Circle **5**



Main Building

- Nurse's Office
- Student Safety & Security
- Attendance Windows / Office, Liaison
- Main Foyer - School Site Secretary, Receptionist
- Principals, Assistant Principals
- Library Conference Room
- Library
- Book Room
 - Text Book Check in/out
 - Book Fees (lost, damaged, stolen)

ASB

- ASB – Associated Student Body (office and class)
 - Office handles payments & paperwork for sports / fees / tickets / Benefactor passes / yearbooks / etc
 - Office home to GHS accountant, administrator, Athletic Director, and Activities Director
 - office hours fluctuate during the year, but are posted; stop taking checks in March timeframe
 - Community Service hours turned in (*always keep a copy for yourself*) – forms online, in office – get preapproval
 - Student ID
 - Photo taken at schedule pickup
 - Photo can be ordered online as school year photo / yearbook photo
 - Keep picture of it on your phone / their phone and carry it at school
 - CLASS – zero period M/W/F for students in leadership – class officers, student body officers, commissioners

Student Services Office

- Registrar
- Student Records
- Mustang Express Counselor
- Academic Coordinators
- School Linked Services (SLS) Coordinator

Anything to do with graduation, scholarship, records, course requirements, schedule, transcripts, enrollment, change of school / placement

Miscellaneous tips

- **PE clothes / lockers –**
 - purchased with cash in first 2 weeks of school in class,
 - PE clothes are grey or blue shorts, sweatpants and t shirts. (about \$25 for t shirt and shorts)
 - Will be issued, returned at year end or purchased.
 - Need a lock, small locker for storage weekly - large locker for during PE class.
- **First Days Items** –pen/pencil; paper/notebook; a bag, large backpack, extra grocery bag (foldable) for the books your student will be getting *{could use Adult helpers in BookRoom for distribution of texts}*
- **Adults on campus-** ALWAYS check in for sticker at main office.
- **Lost and Found** – some in PE/Gym, some in main office
- **Phones**
 - Get your student a calculator and watch (learn to tell time from the wall clock – this got easier in 2018 with the digital clocks installation)
 - Review the electronics policy in planner /handbook / web

Differences from Middle School

- **Textbooks** are student **financial** responsibility (keep them safe / in good condition – report any issues ASAP)
- **Athletics / Extra Curricular Activities**
 - Sports / band / theatre / dances / events / trips / etc
 - Booster clubs for most
 - Must be in **good standing** school / community service to participate
 - **Athletic Packet** provides all information to coach and school that you intend to participate. Must be filled out for EVERY sport (season) you participate.
 - **ImPACT** test (every 2 years or less);
 - physical (yearly after 6/15 ish), insurance requirements vary... pay attention, attend the Season Sports Parent meetings.
 - **Volunteer driver** information requirements dictated by GUSD
 - August 19 Fall Sports Parent Meeting
- **FEES** for entry/parking at sports events (check out Benefactor Pass)
 - Students with ASB Stamp get discounts and free sports entry @ GHS except CCS
- **Student ID** required on student for Book Check out / ASB payments / game entries, etc. (like learning to carry a driver license/ID)
- **Community Service Hours** required for graduation / for sports participation / for dance tickets purchase / etc. every year!

Differences from Middle School (cont.)

- **2019-2020 BLOCK SCHEDULE** (followed unless noted otherwise on WEBSITE)
 - Monday / Friday (55-60 minutes/ 5 or 6 minutes passing)
 - Students go to every class and have brunch (15min) and lunch (35 min)
 - Tuesday (88-90 minutes / 5 or 6 minutes passing)
 - Students go to Period 1 / 2 / 3 / 4 + brunch (15 minutes) / lunch (33 min)
 - Wednesday
 - Students go to Period 5 / 6 / 1 / 2 + brunch (15 minutes) / lunch (33 min)
 - Thursday
 - Students go to Period 3 / 4 / 5 / 6 + brunch (15 minutes) / lunch (33 min)
 - Exceptions are testing / minimum (12:35pm dismissal) / rally days
- **Zero Period** is 7:00 am start M-F
 - (or Link Crew T/Th or Leadership M/W/F)

Differences from Middle School

- Link Crew / ASB
- Dependence/Use of Planner
- Yearly pictures – taken at schedule pickup for ID
- Carrying Student ID
- Aeries Portal usage
- Google Classroom usage
 - Each student has/will be given a gilroyunified.org email based on their student number
 - Teachers / class can collaborate, work in google classroom
- Clubs on campus – getting involved

Get Involved / Stay Involved

- Booster Clubs for extra curricular
- Parent Club
 - Tuesdays monthly 7pm, Library August 20
 - Volunteer Opportunities on campus
 - Book Room (distribution / return)
 - Back to School Night **Sept 11** / Mustang Madness Feb x
 - Honor Roll (Brunch Oct 22/ One Smart Cookie Jan 22/ Luncheon April xx)
 - Hospitality for Staff / Teachers
 - Monthly Staff meetings Holiday Event
 - Teacher / Staff Appreciation Year End Event
 - Student event service / support as requested
 - Interest topic presentations (Principal Meet/ AP - CSF/ GUSD Board/ GPD Resource Officers / New Athletic Director / Activities Director / Academic Coordinators)
 - Fundraising: Mixed Bags Sales, Amazon Smile, Garlic Festival, Concessions at Levi Stadium, donation solicitation, Corporate Matching, Spirit Sales

Contact, Volunteer, Stay Connected

- Email:
 - gilroyhighparentclub@gmail.com
- Connect online:
 - facebook.com/gilroyhighschoolparentclub
- Web page:
 - gilroyhs.gilroyunified.org/mustang-nation/parent-club
- Volunteer Sign ups using signup.com
 - will be listed / accessible via signup.com/go/b3sMxx
- Amazon Smile smile.amazon.com/ch/46-0831444
- Donate Online tinyurl.com/ghspclub